

younique™



*New  
Product*

# YOUNIQUE TOUCH

cream foundation

Available on July 1, 2024 in 27 shades!



## ABOUT THE PRODUCT

Discover the YOUNIQUE TOUCH cream foundation—your new go-to for weightless, full coverage. This hydrating formula smooths imperfections, covers blemishes, and offers a satin, skin-like finish that stays flawless all day. With easy shade matching for every skin tone and undertone, finding your perfect match is a breeze. Enjoy long-lasting radiance that's lightweight, breathable, and transfer-proof.



### *Pricing*

\$42 USD

\$51 CAD

\$61 AUD

\$68 NZD

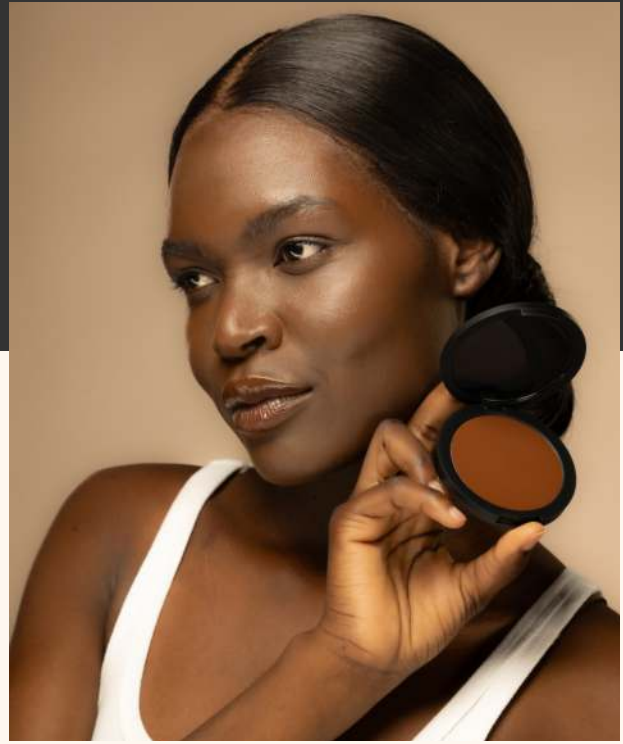
£33 GBP

46 € EUR

\$731 MXN

HK\$326

\$200,000 COP



**Coverage:** Full coverage with weightless hydration.

**Finish:** Satin, skin-like finish.

**Hydration & Skin Benefits:** Hydrating formula with sunflower oil, coffee seed extract, rosemary leaf extract, and magnolia grandiflora bark extract. Formulated for normal to dry skin, offering hydration and antioxidant protection.

**Ideal For:** All skin types (especially good for dry & normal skin)

**Longevity:** Long-wearing (16+ hours) with zero transfer.\*\*

**27 Shades:** Organized into 9 levels (1 to 9), with Cool (C), Neutral (N), and Warm (W) undertones. Example: 1C, 1N, 1W up to 9C, 9N, 9W.

**Ease of Use:** 100% agreed the product is easy to apply, to blend, and felt weightless on their skin.\*\*

**Dermatologist tested, vegan, non-comedogenic.**

**Free of:** Parabens, Phthalates, Formaldehyde, Sulfates, Petroleum, Latex, Gluten, Fragrance, Dairy, Nuts

\*Results from an independent clinical study. Individual results may vary.

\*\*Results from an independent consumer study. Individual results may vary.





## KEY INGREDIENTS

- **Sunflower Oil:** Helps provide hydration and antioxidant protection.
- **Coffee Seed Extract:** Offers antioxidant properties.
- **Rosemary Leaf Extract:** Promotes a healthy skin barrier.
- **Magnolia Grandiflora Bark Extract:** Helps soothe redness.



### Free of:

- Parabens
- Phthalates
- Formaldehyde
- Sulfates
- Petroleum
- Latex
- Gluten
- Fragrance
- Dairy
- Nuts

**Dermatologist tested, vegan, non-comedogenic.**

# PRODUCT CLAIMS

## Clinical Claims

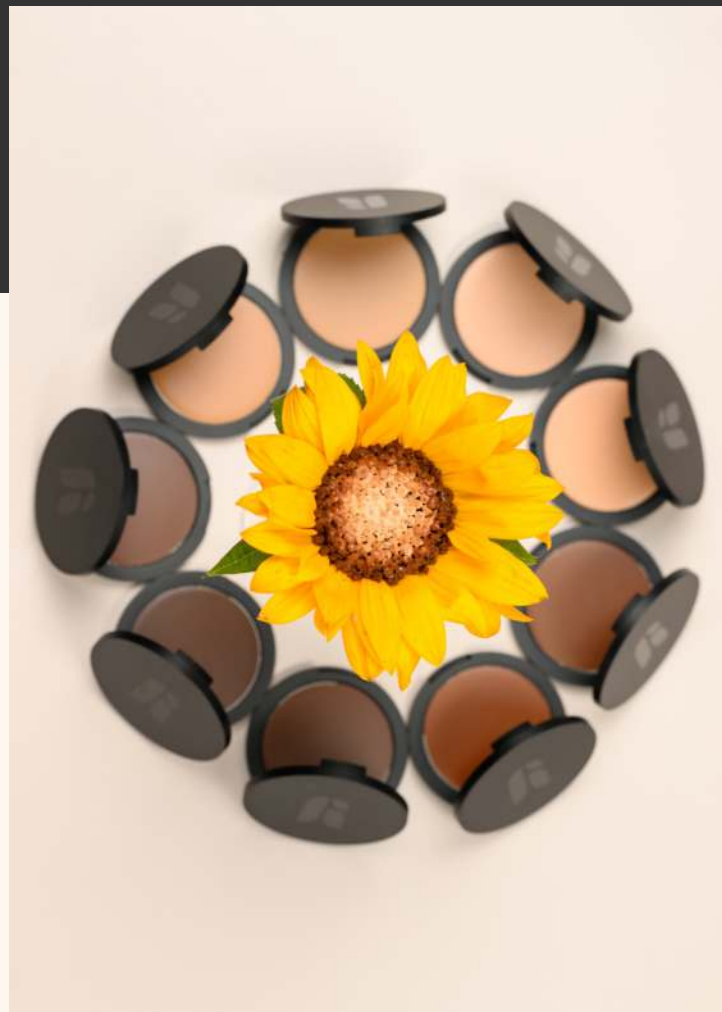
- 100% of users saw a 90% decrease in shine immediately after application and after 12 hours. \*
- 100% of users saw a 51% improvement in moisturization immediately after application. \*

## Consumer Claims

- 100% agreed that the product is easy to apply, blend, and felt weightless on their skin.\*\*
- 93.7% agreed that the product had a naturally radiant finish without making their skin look shiny after application.\*\*
- 90.6% agreed that the product felt lightweight and breathable even after 16 hours.\*\*
- 87.5% agreed that the product didn't transfer even after 16 hours.\*\*
- 87.5% agreed that the product felt hydrating without oiliness after 16 hours.\*\*

*\*Results from an independent clinical study. Individual results may vary.*

*\*\*Results from an independent consumer study. Individual results may vary.*





## APPLICATION TIPS

**PREP & PRIME:** Use GLOWPLEXION cleanser, serum, and moisturizer to ensure clean & moisturized skin. Prime with YOUNIQUE BARE·YOU illuminating primer for added hydration and radiance.

**APPLY:** Use a YOUNIQUE kabuki brush or dampened beauty sponge to apply the YOUNIQUE TOUCH cream foundation. Start at the center of the face and blend outwards. Use a tap, press, and roll motion for seamless blending. Add more product for fuller coverage.

**SET:** Spray TOUCH BEHOLD prime and set mist all over for added staying power. Apply TOUCH BEHOLD prime and set powder to mattify if desired.